



# MARVIS

DISPLAY PRO



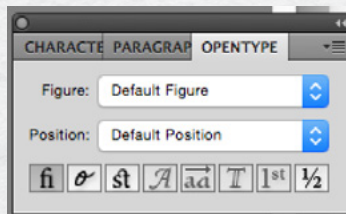
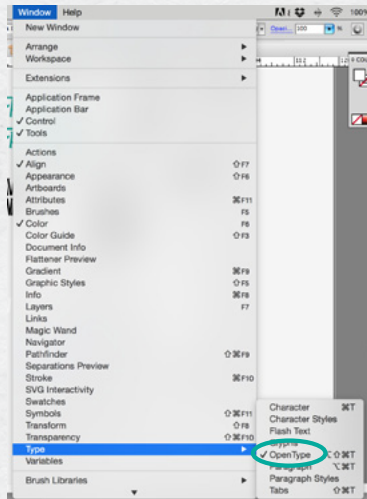
INSTRUCTION MANUAL & SPECIMEN GUIDE



USING  
OPENTYPE

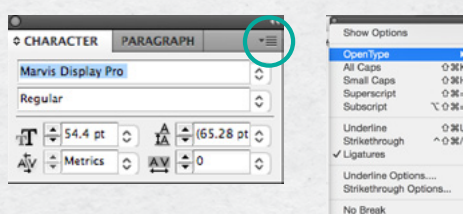
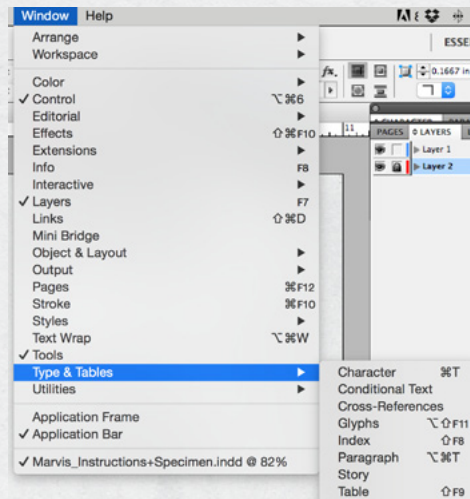


# I. ACCESSING OPENTYPE



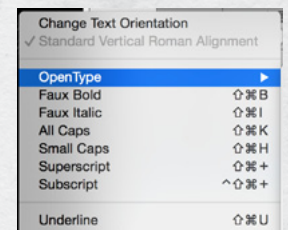
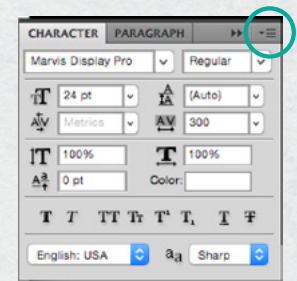
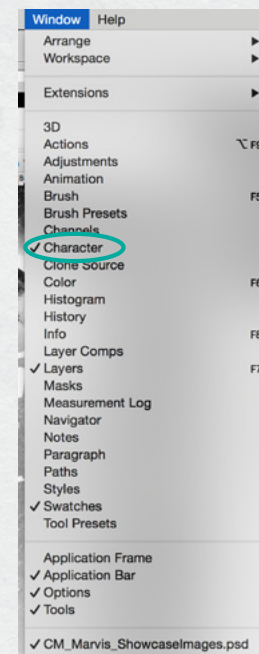
## ILLUSTRATOR

Open Type can be accessed via **Window > Type > OpenType** in the top menu bar. This will open a dedicated panel that you can pair with your other type-related windows for easy access.



## INDESIGN

Open Type can be accessed via **Window > Type & Tables > Character** in the top menu bar. This will open your character panel in which you must then click on the options icon [shown in top right corner of character]. OpenType features are accessible here in the drop down menu.

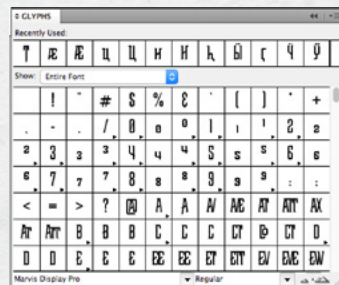
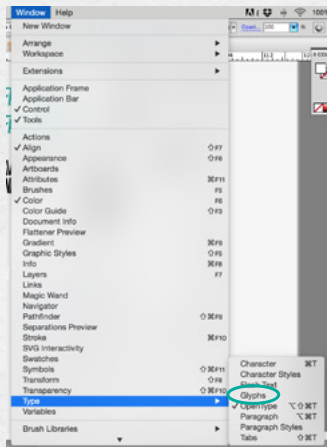


## PHOTOSHOP

Open Type can be accessed via **Window > Character** in the top menu bar. This will open your character panel in which you must then click on the options icon [shown in top right corner of character]. OpenType features are accessible here in the corresponding drop down menu.

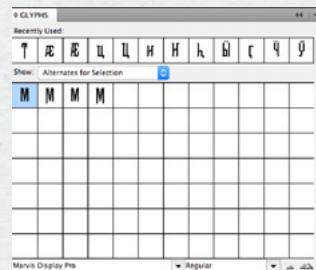
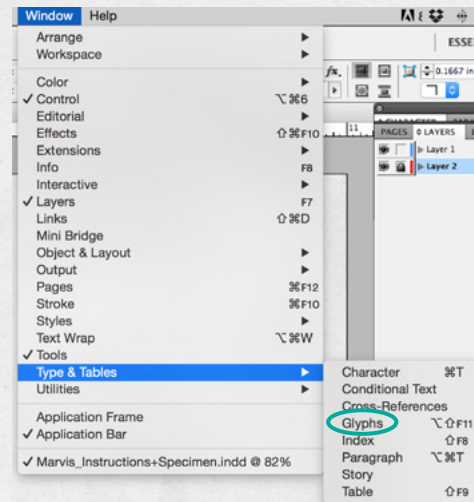


## 2. ACCESSING GLYPHS



### ILLUSTRATOR

Glyphs can be accessed via **Window > Type > Glyphs** in the top menu bar. This will open the Glyphs panel in which you can access all characters included in the font manually.



### INDESIGN

Glyphs can be accessed via **Window > Type & Tables > Glyphs** in the top menu bar. This will open the Glyphs panel in which you can access all characters included in the font manually.

### PHOTOSHOP

Glyphs can be accessed via **Window > Glyphs** in the top menu bar. \* This will open the Glyphs panel in which you can access all characters included in the font manually.

\* Feature available only in Adobe CC 2015. For earlier versions, please investigate alternate methods or simply use Illustrator or Indesign for your type.

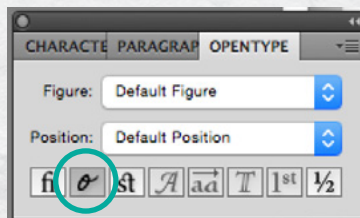


### 3. CONTEXTUAL ALTERNATES

SUCKERPUNCH  
⇕  
SUCKERPUNCH

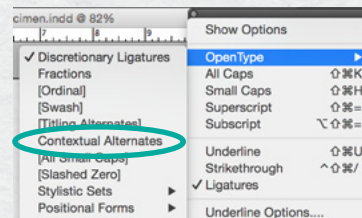
#### Special note:

Activating Contextual Alternates will sometimes override Discretionary and Standard Ligatures if it involves the same letter[s]. If you encounter this situation, de-activate Contextual Alternates and add the desired alternates in manually using the glyphs panel.



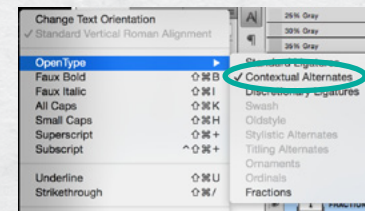
#### ILLUSTRATOR

Select the text you'd like to apply it to and **click the cursive "o" icon in the OpenType panel**. Contextual alternates will substitute for any eligible letter pairings. If you create a new text box and type with this option activated, alternates will automatically sub in.



#### INDESIGN

Select the text you'd like to apply it to and activate via **Character Options > OpenType > Contextual Alternates**.



#### PHOTOSHOP

Select the text you'd like to apply it to and activate via **Character Options > OpenType > Contextual Alternates**.



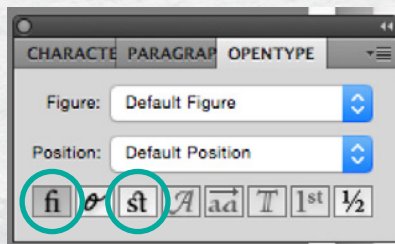
## 4. LIGATURES (STANDARD & DISCRETIONARY)

STANDARD

FACT vs FICTION

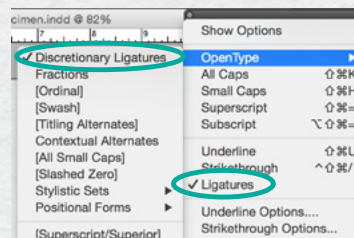
DISCRETIONARY

FACT vs FICTION



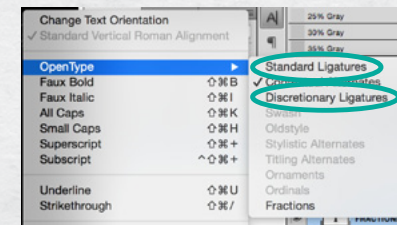
### ILLUSTRATOR

Select the text you'd like to apply it to and **click the "fi" icon for Standard and the "st" icon for Discretionary in the OpenType panel**. Ligatures will be substituted for any eligible letter pairings. If you create a new text box and type with this option activated, ligatures will automatically sub in.



### INDESIGN

Select the text you'd like to apply it to and activate via **Character Options > OpenType > Ligatures** for Standard, or **Character Options > OpenType > Ligatures > Discretionary Ligatures** for Discretionary.



### PHOTOSHOP

Select the text you'd like to apply it to and activate via **Character Options > OpenType > Standard Ligatures**, or **Character Options > OpenType > Discretionary Ligatures**.



# S. TITLING ALTERNATES

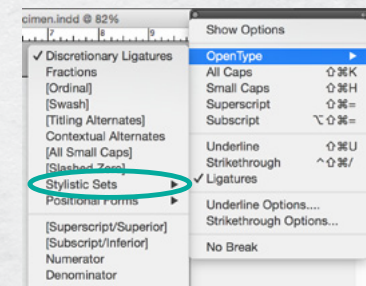
MARTYR  
TO DUTY

Titling Alternates may be accessed in one of two ways, the first being **through Stylistic Set 1 (Character Options > OpenType > Stylistic Sets > Stylistic Set 1 in Indesign only) or manually through the glyphs panel in Indesign, Illustrator or Photoshop CC 2015**. For the most precise application of these alternates, it's recommended you use the glyphs panel since all your characters will turn to title alternates when you switch on the corresponding Stylistic Set. When using the glyphs panel, select the individual character you'd like to replace and activate "Alternates for Selection" in the glyphs drop down box at the top. This will give you direct access to all the alternates for that specific glyph.

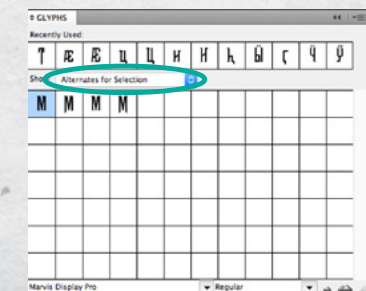
## Special note:

Titling Alternate ligatures are included in this font [please see p.16] however, they are not coded into any ligature or alternate settings. They must be accessed manually from the Glyphs panel [refer to p.3 "Accessing Glyphs" for instructions on how to do this].

## STYLISTIC SETS (INDESIGN ONLY)

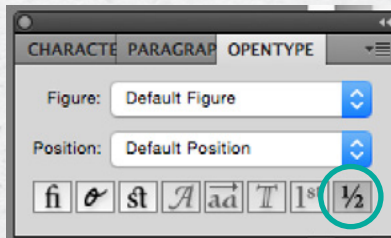
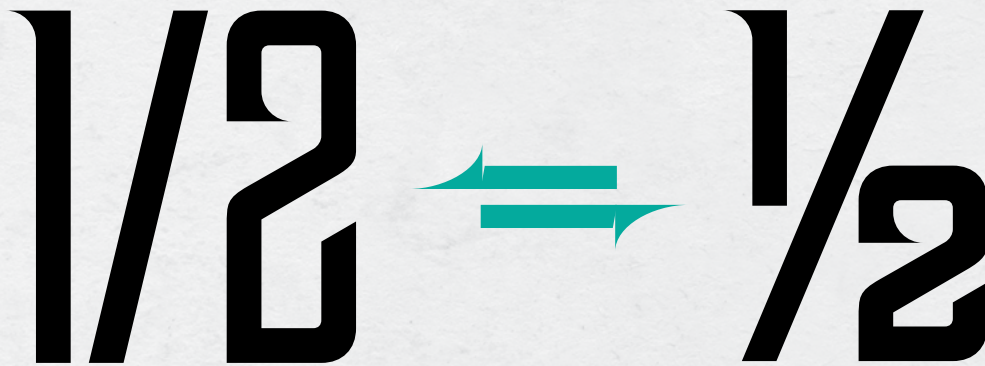


## GLYPHS PANEL



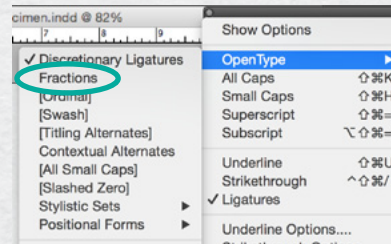


# 6. FRACTIONS



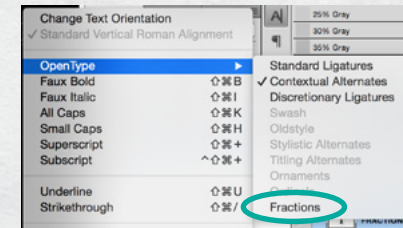
## ILLUSTRATOR

Select the Number/number you'd like to apply it to and **click the "1/2" icon in the OpenType panel**.



## INDESIGN

Select the Number/number you'd like to apply it to and access fractions via **Character Options > OpenType > Fractions**.



## PHOTOSHOP

Select the Number/number you'd like to apply it to and access fractions via **Character Options > OpenType > Fractions**.



# SPECIMEN GUIDE



## UPPERCASE

A Á Â Ã Ä Å Æ Ç È É Ê Ë Ì Í Î Ï Ð Ñ Ò Ó Ô Õ Ö × Ø Ù Ú Û Ü Ý Þ à á â ã ä å æ ç è é ê ë ì í î ï ð ñ ò ó ô õ ö ÷ ø ù ú û ü ý þ ÿ

A Á Â Ã Ä Å Æ Ç È É Ê Ë Ì Í Î Ï Ð Ñ Ò Ó Ô Õ Ö × Ø Ù Ú Û Ü Ý Þ ß à á â ã ä å æ ç è é ê ë ì í î ï ð ñ ò ó ô õ ö ÷ ø ù ú û ü ý þ ÿ



LOWERCASE

A Ă Ą Å Â Ã Ä Å Æ B Ç C Ċ Ď Ğ P Ģ Œ Ø Ð Þ E É Ê Ë Ì Í Î Ï J K L Ł Ľ M N Ń Ņ Ñ Ò Ó Ô Õ Ö Ø Ù Ú Û Ü Ý Þ ß à á â ã ä å æ ç è é ê ë ì í î ï ð ñ ò ó ô õ ö ø ù ú û ü ý þ ÿ

[illegible]

## STYLISTIC SET 1 (TITLING ALTERNATES)

ABFHKMMNPQRSTTVWXY



## STYLISTIC SET 2 (UPPERCASE ALTERNATES)

[illegible][illegible]

## STYLISTIC SET 2 (LOWERCASE ALTERNATES)

[illegible][illegible]







## NUMBERS & FRACTIONS

1234567890 1234567890

$\frac{1}{2}$   $\frac{1}{4}$   $\frac{3}{4}$   $\frac{2}{3}$   $\frac{1}{8}$   $\frac{5}{8}$   $\frac{7}{8}$   $\frac{1}{2}$   $\frac{1}{4}$   $\frac{3}{4}$   $\frac{2}{3}$   $\frac{1}{8}$   $\frac{5}{8}$   $\frac{7}{8}$

## PUNCTUATION

\* \ x : , . . . ! ! # . : ? ; / \_ { } [ ] ( ) - - - < > < > , " " " ,

```
*\x:....!¡#.:?¿"':/_{}[]()-~<><>.,'":
```

## SYMBOLS

f € ∅ \$ £ ¥ ≈ ~ ÷ ø = > ≥ ∞ ∫ < ≤ ¬ − × ≠ ∂ ‰ ‰ + ± ∏ √ ∑ ∫ @ | : ° † ‡ ° № ¶ § ™ ^ ◇

f¢⊙\$€£¥≈~÷ø=>≥∞∫<≤¬-×≠∂%%+±∏√Σ\$@|:'®†‡°№¶®\$™^◇

## CATCHWORDS

AT FROM ON THE AN BY AND FOR IN ONLY NO OF PLUS OR IS THE TO VS WITH

AT FROM ON THE AN BY AND FOR IN ONLY NO OF PLUS OR IS THE TO VS WITH



## LIGATURES (STANDARD UPPERCASE)

---

AT ATT AX At Att CT EE ET ETT EV EVE EW Et Ev EVe EW FA FE FEW FF FFA FFE FFI FFL FI FL  
FLO FN FO FR FT FU FA FE FI FC FLO FO FR FU GTH HT IT IIT IV It Iv LA LE LH LI LL LA LE LO LS  
LA LE MM NT NTO OT OTT OV OW OWE Ot Ov OWp PPY PT PU PE PU PR PU ST STR St STRTU TA TE TH  
TI TL TO TR TT TU TW TY TA TH Ti Tb Tr Tu Tw Ty Ut UTT UV UvE V VO WU VY Ve Vo WU WE WH  
W WD We Wh Wi Wo ZY ZZ

AT ATT AX At Att CT EE ET ETT EV EVE EW Et Ev EVe EW FA FE FEW FF FFA FFE FFI FFL FI FL  
FLO FN FO FR FT FU FA FE FI FC FLO FO FR FU GTH HT IT IIT IV It Iv LA LE LH LI LL LA LE LO LS  
LA LE MM NT NTO OT OTT OV OW OWE Ot Ov OWp PPY PT PU PE PU PR PU ST STR St STRTU TA TE TH  
TI TL TO TR TT TU TW TY TA TH Ti Tb Tr Tu Tw Ty Ut UTT UV UvE V VO WU VY Ve Vo WU WE WH  
W WD We Wh Wi Wo ZY ZZ



## LIGATURES (STANDARD LOWERCASE)

---

AT ATT AX AT ATT CT EE ET ETT EV EVE EW ET EV EVE EW FA FE FEW FF FFA FFE FFI FFL FI FL  
FLO FN FO FR FT FU FA FE FI FL FLO FO FR FU GTH HT IT IIT IV IT IV LA LE LH LL LLA LLE LLO LLS LS  
LA LE MM NT NTO OT OTT OV OW OWE OT OV OWPJ PXY PT PJ PE PJ PR PJ ST STR ST SIRTU TA TE  
TH TI TL TO TR TT TU TW TY TA TH TI TO TR TU TW TY UT UTT UV UTVE VI VO VU VY VE VO VU WE  
WH WI WO WE WH WI WO ZY ZZ

AT ATT AX AT ATT CT EE ET ETT EV EVE EW ET EV EVE EW FA FE FEW FF FFA FFE FFI FFL FI FL  
FLO FN FO FR FT FU FA FE FI FL FLO FO FR FU GTH HT IT IIT IV IT IV LA LE LH LL LLA LLE LLO LLS LS  
LA LE MM NT NTO OT OTT OV OW OWE OT OV OWPJ PXY PT PJ PE PJ PR PJ ST STR ST SIRTU TA TE  
TH TI TL TO TR TT TU TW TY TA TH TI TO TR TU TW TY UT UTT UV UTVE VI VO VU VY VE VO VU WE  
WH WI WO WE WH WI WO ZY ZZ



## LIGATURES (DISCRETIONARY UPPERCASE)

---

AV AE CT G EE FF FFA FFE FFI FFL GS IC LD LOS [CS U W LO W L LO W MM O] CS U PP SS TEE TU U VA  
AV AE CT G EE FF FFA FFE FFI FFL GS IC LD [CS [CS U W LO W L LO W MM O] CS U PP SS TEE TU U VA

## LIGATURES (DISCRETIONARY LOWERCASE)

---

AV AE CT EE GS IC LI LO [CS LU MM O] CS U PP SS TEE TI U VA  
AV AE CT EE GS IC LI LO [CS LU MM O] CS U PP SS TEE TI U VA

## LIGATURES (TITLING ALTERNATES)

---

FA TA FE TE VE TH WH FI TI VI WL FO PU TO VO FR IT UT FU PU TU WU TY TA FE PE TE TH WH FI  
TI WI FO PU TO FR PR UT FU PU TU TY  
FA TA FE TE VE TH WH FI TI VI WL FO PU TO VO FR IT UT FU PU TU WU TY TA FE PE TE TH WH FI  
TI WI FO PU TO FR PR UT FU PU TU TY



## CYRILLIC (UPPERCASE)

---

А Б В Г Г Г Д Е Ё Ж З И Й К К Л М Н О П Р С Т У Ё Ф Х Ч Ц Ш Щ Щ Я Ъ Ы Ь ЛЬ Ъ S E З I I J  
Ь Ю Ъ Ъ В F Б Ж З К Ж К К К Л Ъ Q C T Y P X C Ч Ъ S S I Ж К Н Ч А А Ё O O Ж Э З Й O  
O O Y Y Y Ч Ъ Ъ

А Б В Г Г Г Д Е Ё Ж З И Й К К Л М Н О П Р С Т У Ё Ф Х Ч Ц Ш Щ Щ Я Ъ Ы Ь ЛЬ Ъ S E З I I J  
Ь Ю Ъ Ъ В F Б Ж З К Ж К К К Л Ъ Q C T Y P X C Ч Ъ S S I Ж К Н Ч А А Ё O O Ж Э З Й O O  
O O Y Y Y Ч Ъ Ъ



## CYRILLIC (LOWERCASE)

[illegible]

**A B V G Ğ Ġ D E Ê Ж З И Й K Ḱ L M H O П P C T Y Ў Ф X Ч Ц Ш Щ Ъ Я Ы Ь ЛЬ Ю S E Z I Ĳ  
Ћ Ю Ѣ Ѧ Ѯ V F Ѓ Ж З Қ К Ќ К̂ К̄ К̆ К̇ К̈ К̉ К̊ К̋ К̌ К̍ К̎ К̏ К̐ К̑ К̒ К̓ К̔ К̕ К̖ К̗ К̘ К̙ К̚ К̛ К̜ К̝ К̞ К̟ К̠ К̡ К̢ К̣ К̤ К̥ К̦ К̧ К̨ К̩ К̪ К̫ К̬ К̭ К̮ К̯ К̰ К̱ К̲ К̳ К̴ К̵ К̶ К̷ К̸ К̹ К̺ К̻ К̼ К̽ К̾ К̿ k  
ö ū ü ý č b ħ**

## CYRILLIC LIGATURES

Н н Ц ц Æ æ

Н Н Ц Ц Æ Æ





nowheresburg@gmail.com  
**nowheresburg.com**