

## Emigre Fonts

Thank you for your font purchase!

To protect your investment, please make sure your registration is complete.

### Registration

Registered owners receive free technical support for 60 days. You are automatically registered when purchasing fonts directly from Emigre. When purchasing from a dealer, register your Emigre fonts online within 30 days of purchase at: <http://www.emigre.com/fontreg>

Please inform us if you have a change of address so that we may keep you current on any upgrades at: [sales@emigre.com](mailto:sales@emigre.com)

### Font Installation

See the installation instructions page below or go to: <http://www.emigre.com/EFTS.php>

To avoid problems, do not attempt to alter the names of any font files. If you have a font management utility installed, please refer to its user's guide to determine if the instructions given here apply.

Macintosh PostScript, Macintosh TrueType and Windows formats are sold separately.

Click on a section below:

**User License**

**Installation Instructions**

**Basic Character Set: Macintosh**

**Basic Character Set: Windows**

**Feature Examples: Alphabetic**

**Feature Examples: Numeric**

**OpenType Typographic Features**

**Filosofia Features**

### Contact:

Emigre, Inc. Email: [sales@emigre.com](mailto:sales@emigre.com)

Technical Support: [support@emigre.com](mailto:support@emigre.com)

Emigre Online: <http://www.emigre.com>

Font registration: <http://www.emigre.com/fontreg>

Copyright © 1990, 1998-2002, Emigre, Inc. Emigre Fonts is a trademark of Emigre Graphics. Apple, Macintosh, LaserWriter, and Finder are trademarks of Apple Computer, Inc. PostScript is a trademark of Adobe Systems Incorporated. Windows is a trademark of Microsoft.

## Emigre Fonts User License - Software License Agreement

### You agree to the following user licensing terms:

1. The Emigre Font Software is licensed for use at one (1) location with a maximum of six (6) devices. For example: five (5) CPUs and one (1) printer or output device.
2. Use of the Emigre Font Software at more than one (1) location or with more than six (6) devices requires a Multi-Device Site License upgrade. A device may be, but is not limited to, a printer, rasterizer, video display terminal, CPU, workstation or any device where the font software is rasterized or display of the Emigre Font is generated from font software outlines using Adobe Type Manager or similar software. For example, a display terminal shall be considered a device if the Emigre Font outline is embedded or otherwise included for viewing by end users in a multimedia CD.
3. Except as permitted herein, you may not modify, adapt, translate, reverse engineer, decompile, disassemble, alter or otherwise copy the Emigre Font Software.
4. You are permitted to make a single back-up copy. The Emigre Font Software or documentation may not be sublicensed, sold, leased, rented, lent, or given away to another person or entity.
5. The Emigre Font Software may be returned or exchanged only if defective. Defective software will be replaced when accompanied by a valid sales receipt and Emigre is notified within one (1) week of purchase.
6. You agree that any derivative works created by you from the Emigre Font Software, including, but not limited to, software, EPS files, or other electronic works, are considered derivative works under U.S. Law and use of the derivative work is subject to the terms and conditions of this License Agreement. Derivative works may not be sublicensed, sold, leased, rented, lent, or given away without written permission from Emigre. Emigre shall not be responsible for unauthorized, modified and/or regenerated software or derivative works. Embedding of the Emigre Fonts Software in any form is strictly prohibited without an additional license.
7. The Emigre Font Software is protected under domestic and international trademark and copyright law. You agree to identify the Emigre fonts by name and credit Emigre's ownership of the trademarks and copyrights in any design or production credits.
8. Any breach of the terms of this Agreement shall be cause for termination. In the event of termination, and without limitation of any remedies under law and equity, you agree to immediately return the Font Software to Emigre and certify that no copy remains in your possession or control.
9. EMIGRE MAKES NO WARRANTIES, EXPRESS OR IMPLIED AS TO MERCHANTABILITY, FITNESS FOR A PARTICULAR PURPOSE, OR OTHERWISE. WITHOUT LIMITING THE FOREGOING, EMIGRE SHALL IN NO EVENT BE LIABLE TO THE LICENSED USER OR ANY OTHER THIRD PARTY FOR ANY DIRECT, INDIRECT, CONSEQUENTIAL, OR INCIDENTAL DAMAGES, INCLUDING DAMAGES FROM LOSS OF BUSINESS PROFITS, BUSINESS INTERRUPTION, LOSS OF BUSINESS INFORMATION, ARISING OUT OF THE USE OR INABILITY TO USE THE PRODUCT EVEN IF NOTIFIED IN ADVANCE. UNDER NO CIRCUMSTANCES SHALL EMIGRE'S LIABILITY EXCEED THE REPLACEMENT COST OF THE SOFTWARE. FOR MORE INFORMATION REGARDING THIS LICENSE GO TO: <http://www.emigre.com/EUL.php>

**FONT EMBEDDING** Embedding of the Emigre Fonts Software in digital documents or in any other form is governed by a separate license agreement. If an embedding license is desired, the licensee must represent and warrant that licensee's encryption of the embedded Emigre Fonts is secure enough to prevent any access or use by others. For more information regarding an Embedding License go to: <http://www.emigre.com/Embedding.php>

### LICENSE UPGRADES

The Emigre Font Software is licensed for use at a single location for use with a maximum six (6) devices. For example: (1) printer with up to five (5) CPUs. The Emigre Font Software may not be shared between locations or business entities. Each additional location and/or entity must purchase a separate license to be used in accordance with the terms of the Emigre Font Software License. License upgrades may be purchased for use with additional devices. The upgrade price is calculated as a percentage of the original price of the software. To determine the number of devices, add up all CPUs, workstations, printers, and other devices that use the fonts. The following is cumulative:

- 1 - 6 devices (standard license)
- 7 -12 devices: add 50 percent
- 13-60 devices: add 20% for each 6 devices
- 61-150 devices: add 15% for each 6 devices
- 151-300 devices: add 10% for each 6 devices
- over 300 devices: add 5% for each 6 devices

Very large or unlimited uses of the Emigre Font Software will require a custom license agreement.

For information about various license options go to: <http://www.emigre.com/EULOptions.php>

Click on a section below:

**Registration**

**Installation Instructions**

**Basic Character Set: Macintosh**

**Basic Character Set: Windows**

**OpenType Typographic Features**

## Installation Instructions

### OpenType system requirements:

Macintosh OS 8.1 or higher with Adobe Type Manager 4.6 or higher.

Microsoft Windows 95 or higher with Adobe Type Manager 4.1 or higher.

For the most recent installation instructions, please see <http://www.emigre.com/support>

### Macintosh Installation for OS X ("Native" for Carbon/Cocoa Applications)

1. Quit all applications.
2. Select the OpenType (.otf) font files to install.  
(Be sure to select the fonts themselves, not a folder containing the fonts.)
3. Drag and drop the icons into the Fonts folder in the Library folder. Click OK to install the fonts.

**Macintosh Installation for OS 8.x and OS 9.x**  
**Requires Adobe Type Manager 4.6 or later.**  
ATM Light is available for free from Adobe's Web site:  
<http://www.adobe.com>

1. Quit all applications.
2. Select the OpenType (.otf) font files to install.  
(Be sure to select the fonts themselves, not a folder containing the fonts.)
3. Drag and drop the icons into the Fonts folder inside the System folder. Click OK to install the fonts.

### Windows Installation:

**For Microsoft Windows 95 or later.**

**Requires Adobe Type Manager 4.1 or later.**

ATM Light is available for free from Adobe's Web site:  
<http://www.adobe.com>

1. Open the ATM Control Panel.
2. Click the Add button.
3. In the Directories list box, choose the appropriate drive and directory that contain the font(s) you want to add.
4. Select the fonts you want to install and click the Add button. ATM will copy the appropriate PFM (font metrics) and PFB (PostScript outline fonts) files to the default target directories. The newly added fonts will now appear in the Installed ATM Fonts list.
5. Exit from the ATM Control Panel.
6. Quit and restart Windows to use the new fonts.

Click on a section below:

**Registration**

**Emigre Fonts User License**

**Basic Character Set: Macintosh**

**Basic Character Set: Windows**

**OpenType Typographic Features**

## Basic Character Set: Macintosh

This key map applies to Emigre's standard character set. See the OpenType Features section for additional characters available in Filosofia OpenType.

### Composite Characters

option - e	+	a	=	á
option - e	+	e	=	é
option - e	+	i	=	í
option - e	+	o	=	ó
option - e	+	u	=	ú
option - e	+	E	=	É
option - i	+	a	=	â
option - i	+	e	=	ê
option - i	+	i	=	î
option - i	+	o	=	ô
option - i	+	u	=	û
option - n	+	a	=	ã
option - n	+	n	=	ñ
option - n	+	o	=	õ
option - n	+	A	=	Ã
option - n	+	N	=	Ñ
option - n	+	O	=	Õ
option - u	+	a	=	ä
option - u	+	e	=	ë
option - u	+	i	=	ï
option - u	+	o	=	ö
option - u	+	u	=	ü
option - u	+	y	=	ÿ
option - u	+	A	=	Ä
option - u	+	O	=	Ö
option - u	+	U	=	Ü
option - `	+	a	=	à
option - `	+	e	=	è
option - `	+	i	=	ì
option - `	+	o	=	ò
option - `	+	u	=	ù
option - `	+	A	=	À

Click on a section below:

[Registration](#)

[Emigre Fonts User License](#)

[Installation Instructions](#)

[Basic Character Set: Windows](#)

[OpenType Typographic Features](#)

KEY	CHAR	SHIFT	OPT.	OP-SH
A	a	A	å	Å
B	b	B		ı
C	c	C	ç	Ç
D	d	D		Î
E	e	E	,	,
F	f	F	f	ï
G	g	G	©	~
H	h	H	.	Ó
I	i	I		^
J	j	J		Ô
K	k	K		
L	l	L		Ò
M	m	M		Â
N	n	N		
O	o	O	ø	Ø
P	p	P		
Q	q	Q	œ	Œ
R	r	R	®	‰
S	s	S	ß	Í
T	t	T	†	˘
U	u	U	”	”
V	v	V		
W	w	W		”
X	x	X		
Y	y	Y	¥	Á
Z	z	Z		
1	1	!	¡	/
2	2	@	™	EURO
3	3	#	£	‹
4	4	\$	¢	›
5	5	%		fi
6	6		§	fl
7	7	&	¶	‡
8	8	*	•	°
9	9	(	ª	.
0	0	)	º	,
,	,	~		
-	-	_	—	—
[	[	{	“	”
]	]	}	‘	’
;	;	:	…	Ú
'	'	"	æ	Æ
,	,	<		
.	.	>		
/	/	?		¿
\	\		«	»

## Basic Character Set: Windows

This key map applies to Emigre's standard character set. See the OpenType Features section for additional characters available in Filosofia OpenType.

### Note about Numbers:

Some Emigre fonts include both lining and old style figures.

**Lining** numerals are aligned with the height of the capital letters, creating an even appearance with upper-case text.

**Old style** numerals, also called "non-lining," have ascenders and descenders like the lowercase letters, with emphasis along the x-height, thus creating an even appearance within lowercase text.

For more information about lining and old style figures, see: [www.emigre.com/EFoGC.html](http://www.emigre.com/EFoGC.html)

### Euro Symbol

Emigre fonts include the Euro symbol in both ALT 0164 and ALT 0128 key positions.

For information about the Emigre Euro font, see: [www.emigre.com/Euro.html](http://www.emigre.com/Euro.html)

Click on a section below:

[Registration](#)

[Emigre Fonts User License](#)

[Installation Instructions](#)

[Basic Character Set: Macintosh](#)

[Feature Examples](#)

[OpenType Typographic Features](#)

[Filosofia Features](#)

The characters shown below are accessed by typing the corresponding character position number on the numeric keypad while pressing the ALT key.

<b>ANSI Set:</b>	0128	<b>EURO</b>	0203	Ë	<b>IBM Ext.</b>	128	Ç
	0131	<i>f</i>	0204	ì	<b>Set:</b>	129	ü
	0132	„	0205	í		130	é
	0133	...	0206	î		131	â
	0134	†	0207	ï		132	ä
	0137	‰	0209	Ñ		133	à
	0140	Œ	0210	Ò		134	å
	0145	‘	0211	Ó		135	ç
	0146	’	0212	Ô		136	ê
	0147	“	0213	Õ		137	ë
	0148	”	0214	Ö		138	è
	0149	•	0216	Ø		139	ï
	0150	—	0217	Ù		140	î
	0151	—	0218	Ú		141	ì
	0153	™	0219	Û		142	Ä
	0156	œ	0220	Ü		143	Å
	0159	Ÿ	0223	ß		144	É
	0161	ı	0224	à		145	æ
	0162	¢	0225	á		146	Æ
	0163	£	0226	â		147	ô
	0164	<b>EURO</b>	0227	ã		148	ö
	0165	¥	0228	ä		149	ò
	0169	©	0229	å		150	û
	0171	«	0230	æ		151	ù
	0174	®	0231	ç		152	ÿ
	0176	°	0232	è		153	Ö
	0178	²	0233	é		154	Ü
	0179	³	0234	ê		155	¢
	0181	μ	0235	ë		156	£
	0182	¶	0236	ì		157	¥
	0185	¹	0237	í		159	<i>f</i>
	0187	»	0238	î		160	á
	0188	¼	0239	ï		161	í
	0189	½	0240	ð		162	ó
	0190	¾	0241	ñ		163	ú
	0191	¿	0242	ò		164	ñ
	0192	À	0243	ó		165	Ñ
	0193	Á	0244	ô		168	¿
	0194	Â	0245	õ		171	½
	0195	Ã	0246	ö		172	¼
	0196	Ä	0248	ø		173	ı
	0197	Å	0249	ù		174	«
	0198	Æ	0250	ú		175	»
	0199	Ç	0251	û		225	ß
	0200	È	0252	ü		227	¶
	0201	É	0255	ÿ		230	μ
	0202	Ê					

(Regular, Italic, Bold, Grand, Grand Bold &amp; Unicaſe)

ABCDEFG©®?!\*'"“”‘’&abcdefgh@\$\_0123589€%

All Caps (Regular, Italic, Bold, Grand &amp; Grand Bold)

ABCDEFG©®?!\*'"“”‘’&ABCDEF@\$\_0123589€%

Small Caps (Regular &amp; Grand)

ABCDEFG©®?!\*'"“”‘’&ABCDEFGH@\$\_0123589€%

All Small Caps (Regular &amp; Grand)

ABCDEFGHIJK©®?!\*'"“”‘’&ABCDEFGHIJK@\$\_0123589€%

Ordinals (Regular only)

abdehilmnorſt 1<sup>ſt</sup> 2<sup>nd</sup> 3<sup>rd</sup> 4<sup>th</sup> M<sup>lle</sup> M<sup>me</sup> N<sup>o</sup> Dr 1<sup>er</sup> 1<sup>re</sup>

Ordinal Caps "Ordinal + Small Caps or All Caps. (Regular only)

ABDEHILMNORST 1<sup>ST</sup> 2<sup>ND</sup> 3<sup>RD</sup> 4<sup>TH</sup> M<sup>LLE</sup> M<sup>ME</sup> N<sup>O</sup> 1<sup>ER</sup>

Basic Ligatures (Regular, Italic, Bold, Grand, Grand Bold &amp; Unicaſe)

fi fl ff ffi ffl fire flying offers affinities affloating

Click on a ſection below:

[Registration](#)[Emigre Fonts User License](#)[Installation Instructions](#)[Basic Character Set: Macintosh](#)[Basic Character Set: Windows](#)[More Feature Examples](#)[OpenType Typographic Features](#)[Filosofia Features](#)

## Feature Examples: Numeric

Proportional Old Style Numbers (Regular, Italic, Bold, Grand & Grand Bold)

1234567890 Old style for use in lower case text

Proportional Lining Numbers (Regular, Italic, Bold, Grand, Grand Bold & Unicaſe)

1234567890 LINING WITH CAPITAL TEXT

Tabular Old Style Numbers (Regular, Italic, Bold, Grand & Grand Bold)

1234567890 For ſetting tabular preſentations

Tabular Lining Numbers (Regular, Italic, Bold, Grand, Grand Bold & Unicaſe)

1234567890 For Setting Tabular Preſentations

Superior Numbers & Scientific Inferior Numbers (Regular only)

0123456789 2<sup>2</sup> H<sub>2</sub>O h<sup>2</sup>=a<sup>2</sup>+b<sup>2</sup>

Numerator & Denominator (Regular only)

0123456789 0123456789 Footnote<sup>36</sup>

Fractions and Arbitrary Fractions (Regular only)

1/2 1/3 2/3 1/4 3/4 1/8 3/8 5/8 7/8 1/10 1/16 3/16 1/32 3/32 1/64 1/100

Ornaments (Regular only) Access via Glyphs Palette from Type / Insert Glyphs



Click on a ſection below:

[Emigre Fonts User License](#)

[Installation Instructions](#)

[Basic Character Set: Macintosh](#)

[Basic Character Set: Windows](#)

[More Feature Examples](#)

[OpenType Typographic Features](#)

The OpenType format makes it possible to incorporate typographic features, such as small caps, ligatures, old style numerals and lining numerals, all within one font file, thereby simplifying font management and usage. The Filosofia OpenType package contains the equivalent of over 17 fonts. It includes everything in the Regular package, the Smart Ligatures package and more!

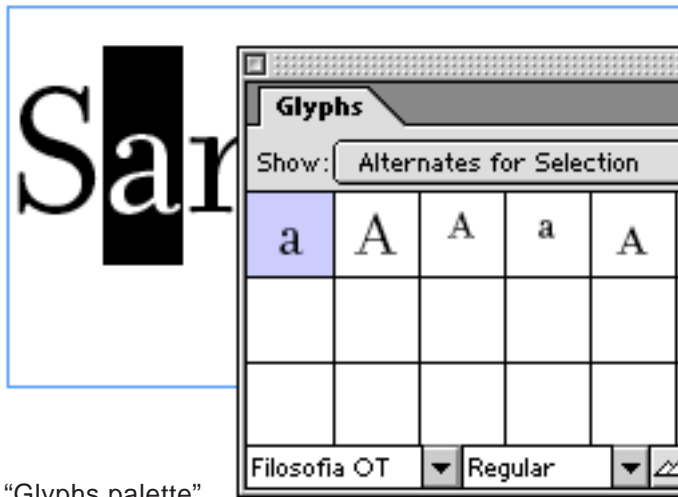
For example, installation of Filosofia Regular OpenType requires installing just one file which is equivalent to installing over 7 files with the Type1 PostScript format.

### Cross Platform

OpenType is also a cross-platform format. An OpenType font file can be installed on both Macintosh and Windows platforms, and installation requires installing just one file per font style. In comparison, the Type1 PostScript format requires installation of multiple files per font style which differ between Macintosh and Windows.

### Advanced Typography

The Filosofia OpenType fonts include hundreds of characters, many with alternate forms.



"Glyphs palette"  
from Adobe InDesign 2.0

Click on a section below:

[Emigre Fonts User License](#)

[Installation Instructions](#)

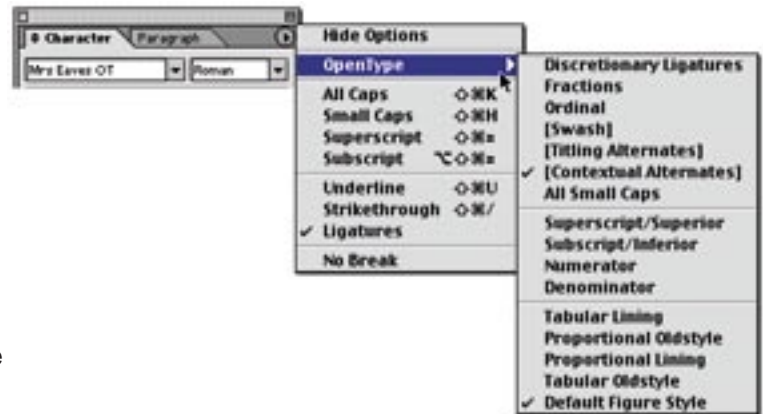
[Basic Character Set: Macintosh](#)

[Basic Character Set: Windows](#)

[Feature Examples](#)

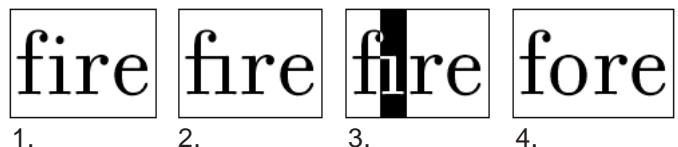
[Filosofia Features](#)

These alternate glyphs allow OpenType fonts to include various features, such as small caps, ligatures, old style numerals and lining numerals. Because these features are stored within a single font file, they are accessed through the application feature menu, rather than as separate fonts through the font menu. (Accessing these features requires an application which supports OpenType features, such as Adobe InDesign 2.0)



Having features incorporated into one font file has several advantages, including:

- The ability to change fonts or styles without losing feature tags. For example, if lining numbers have been selected for Filosofia Regular, and a portion of the text is changed to Filosofia Bold, the lining numbers will automatically be used for the Bold.
- More comprehensive kerning. Because all characters are within one font file, an OpenType font may contain kerning between features. For example, kerning pairs can be provided between ligatures and the regular characters.
- Improved text handling of ligatures. Because ligatures are handled as live text, it is possible to spell check text with ligatures. The application reads an "ffi" ligature as three characters instead of one. Ligatures can also be edited as live text; each character within a ligature can be selected and edited.



1. no ligatures
2. ligatures activated
3. select the "i" and change to "o"
4. ligatures can be edited as regular text



## Filosofia Features

The following features are provided in the Filosofia OpenType package:

### Regular

All Caps  
Small Caps  
All Small Caps  
Ordinals  
Ordinal Caps  
Basic Ligatures  
Discretionary Ligatures  
Proportional Old Style Numbers  
Proportional Lining Numbers  
Tabular Old Style Numbers  
Tabular Lining Numbers  
Superior Numbers  
Scientific Inferior Numbers  
Numerator  
Denominator  
Arbitrary Fractions  
Ornaments

### Italic

All Caps  
Basic Ligatures  
Proportional Old Style Numbers  
Proportional Lining Numbers  
Tabular Old Style Numbers  
Tabular Lining Numbers  
Ornaments

### Bold

All Caps  
Basic Ligatures  
Proportional Old Style Numbers  
Proportional Lining Numbers  
Tabular Old Style Numbers  
Tabular Lining Numbers  
Ornaments

Click on a section below:

[Registration](#)

[Emigre Fonts User License](#)

[Installation Instructions](#)

[Basic Character Set: Macintosh](#)

[Basic Character Set: Windows](#)

[Feature Examples](#)

[OpenType Typographic Features](#)

To access the Filosofia OpenType features with Adobe InDesign 2.0, select the following features from the OpenType menu. Note that some features require multiple items to be activated in the InDesign OpenType menu.

### All Caps

Select "All Caps"

### Small Caps

Select "Small Caps"

### All Small Caps

Select "All Small Caps"

Select "Denominator" + "All Small Caps"

### Ordinals

Select "Ordinals"

### Ordinal Caps

Select "Ordinals" + "AllCaps" or "Small Caps"

### Basic Ligatures

Select "Ligatures"

### Discretionary Ligatures

Select "Discretionary Ligatures"

### Proportional Old Style Numbers

Select "Proportional Old Style"

### Proportional Lining Numbers

Select "Proportional Lining"

### Tabular Old Style Numbers

Select "Tabular Old Style"

### Tabular Lining Numbers

Select "Tabular Lining"

### Superior Numbers

Select "Superscript/Superior"

### Scientific Inferior Numbers

Select "Subscript/Inferior"

### Numerator

Select "Numerator"

### Denominator

Select "Denominator"

### Arbitrary Fractions

Select "Fractions" numbers following a slash will be turned into fraction denominators, all other numbers will be turned into fraction numerators.

### Ornaments

Open the Glyphs Palette from Type / Insert Glyphs  
Then select "Ornaments (ornm)"

