

Metrisch
Ver 1.00

Type Specimen
Handbook

Designer
Gumpita Rahayu

Publisher
Absolut Foundry

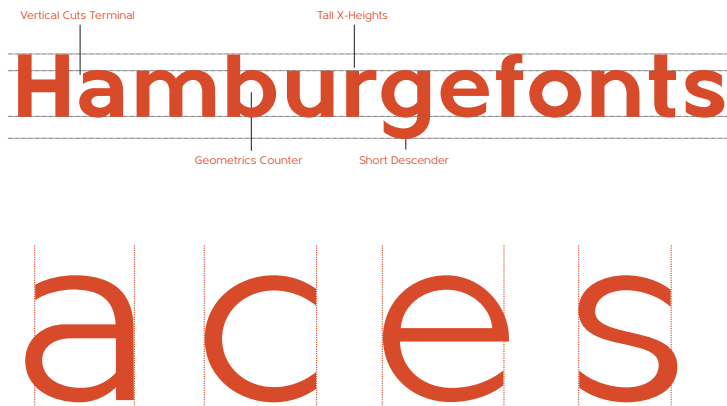
Artwork
Deni Anggara

An abstract graphic of a black liquid splash or ink blot, with a textured, wavy surface. The splash is centered horizontally and partially obscured by the word 'Metrisch' in white. The background is a solid orange-red color.

Metrisch

Version
1.000

Construction
Metrisch



Description
Metrisch

Metrisch is new sans serif typefamily of seven weights plus seven italics uprights in each weights. The typefaces designed based on traditional geometric construction that have been built with letter size wider, the x-heights taller and short descender that almost proportioned with the basic letter shape.

With little details added like most-common humanist typefaces that have clean vertical cuts on the terminals and optimized sharp corners that makes this fonts smooth and refined looks. It was represents the flavor to combine semi-humanist and grotesk feels.

The weights comes from thin to extrabold suitable to make display appearance, and the book and medium weights also works well as small/medium text sizes to accompany design of editorial fashion magazine, headline, websites heading, poster, advertising, logo, signage, etc Also, Metrisch type-family fully loaded with OpenType features such as some stylistic alternates, case-sensitive forms, fractions, small capitals, and another most common numerals features such as super & subscript, tabular & oldstyle figures, numerator-denominator, and has more extended latin diacritics characters.

Metrisch ExtraLight

Hamburg Gefonts

Metrisch Light

Hamburg Gefonts

Metrisch Book

Hamburg Gefonts

Metrisch Medium

Hamburg Gefonts

Metrisch Bold

Hamburg Gefonts

Metrisch ExtraBold

Hamburg Gefonts

Metrisch ExtraLight Italic

Hamburgergefonts

Metrisch Light Italic

Hamburgergefonts

Metrisch Book Italic

Hamburgergefonts

Metrisch Medium Italic

Hamburgergefonts

Metrisch Bold Italic

Hamburgergefonts

Metrisch ExtraBold Italic

Hamburgergefonts

North Rhine-Westphalia

GELSENKIRCHEN

The Oil Refining

Largest solar power plant

Industrialisation

2,500/km² (6,400/sq mi)

Cologne-Minden Railway

VELTINS-ARENA

City of a thousand fires

North Rhine-Westphalia

GELSENKIRCHEN

The Oil Refining

Largest solar power plant

Industrialisation

2,500/km² (6,400/sq mi)

Cologne–Minden Railway

VELTINS-ARENA

City of a thousand fires

Basic Characters

ABCDEFGHIJKLMNOPQRSTUVWXYZ
ABCDEFGHIJKLMNOPQRSTUVWXYZ
abcdefghijklmnopqrstuvwxyz

Numerals

1234567890 → 1234567890
1234567890 → 1 2 3 4 5 6 7 8 9 0
H₁₂₃₄₅₆₇₈₉₀ H¹²³⁴⁵⁶⁷⁸⁹⁰
H¹²³⁴⁵⁶⁷⁸⁹⁰ H₁₂₃₄₅₆₇₈₉₀
¼½¾⅓⅔⅕⅖⅗⅘⅙⅚

Punctuation

? ! ¨ § & @ # % ‰ ‹ › „ … ; : – — _
‘ ’ “ ” „ „ ® © ™ * † ‡
() [] { } / \ ¨ ° « » ‹ › + − × ÷ ¬

Currency

\$ ¢ £ ¤ ¥ ₣ € £ ₧ ₨ ₪ ₮ ₯ ₰

Symbols

← ↑ → ↓ ↖ ↗ ↘ ↙
√ ∫ ≈ ≠ ≤ ≥ ◊ ◄ ► ▴ ▾

Alternates

aty → aty

Ligatures

ff fi fl ffi ffl fj ffj

Case-Sensitive

(H)[]{}<>«»<>¡¿---•

Uppercase Accents

Á Â Ã Ä Å Æ Ç È É Ê Ë
Ē Ĕ Ė Ĝ Ğ Ğ Ĥ Ħ İ Ĭ Ĵ Ĳ Ĵ Ĵ Ĵ Ĵ Ĵ Ĵ Ĵ
Ō Ŏ Ő Œ Ø Œ P R S S S Š Ţ Ũ Ū Ŭ
Ů Ű Ų Ŵ Ŷ Ÿ Ž Ž Ž

Lowercase Accents

á à â ã ä å æ ß ç è é ê ë
ē ĕ ė ĝ ğ ğ ĥ ĩ ĩ ĩ ĩ ĩ ĵ ĵ Ĵ Ĵ Ĵ Ĵ Ĵ
ô õ ö ő ø œ þ ÿ š š š š ŧ ú û ü ů
ū ŭ ű ų ŵ ŷ Ź Ź Ź

Smallcaps Accents

À Á Â Ã Ä Å Æ Ç È É Ê Ë Ĩ Ĵ Ł Ñ
Ò Ó Ô Õ Ö Ø Œ Š Ů Ú Ŭ Ÿ Ź

INDUSTRIAL REVOLUTION

CREATED A DEMAND FOR METAL PARTS

The Industrial Revolution created a demand for metal parts used in machinery. This led to the development of several machine tools for cutting metal parts. They have their origins in the tools developed in the 18th century by makers of clocks and watches and scientific instrument makers to enable them to batch-produce small mechanisms. Before the advent of machine tools, metal was worked manually using the basic hand tools of hammers, files, scrapers, saws and chisels. *Consequently*, the use of metal was kept to a minimum. Wooden components had the disadvantage of changing dimensions with temperature and humidity, and the various joints tended to rack (work loose) over time. As the Industrial Revolution progressed, machines with metal parts and frames became more common.

The Industrial Revolution created a demand for metal parts used in machinery. This led to the development of several machine tools for cutting metal parts. They have their origins in the tools developed in the 18th century by makers of clocks and watches and scientific instrument makers to enable them to batch-produce small mechanisms. Before the advent of machine tools, *metal was worked manually using the basic hand tools of hammers, files, scrapers, saws and chisels. Consequently, the use of metal was kept to a minimum. Wooden components had the disadvantage of changing dimensions with temperature and humidity, and the various joints tended to rack (work loose) over time. As the Industrial Revolution progressed, machines with metal parts and frames became more common.*

Ligatures

fi ffi → fi ffi

Superior & Inferior

H³ → H₃

Stylistic Alternates

aty → aty

Numerator & Denominator

H³ → H₃

Case Sensitive

(Hı) → (Hı)

Fraction

1/2 → ½

Tabular Figures

123 → 123

Old Style Figures

123 → 123

Tabular Lining & Old Style

123 → 1 2 3

Small Capitals

SMALL CAPS

FONT DETAILS

Family name : Metrisch

Font Weights: 6 Weights + Italics Uprights

Format : OpenType PS (OTF)

Glyph count : 560

LEGAL

Designer : Gumpita Rahayu

Creation Year : 2013

Publisher : Absolut Foundry

Artwork : Deni Anggara